

BTEC Tech Award in Health & Social Care

What are BTECs?

Chosen by over a million students every year, BTECs are vocational qualifications designed to help your learners succeed. Students develop knowledge and understanding through applying their learning to work-related contexts, and gain the skills they need for further study and employment.

What are BTEC Tech Awards?

Designed specifically for schools, BTEC Tech Awards are brand new Level 1 and Level 2 qualifications for first teaching in September 2017. Complementing GCSEs and providing a first glimpse into a professional sector, these qualifications assess learners through assignments and tasks rather than traditional exams.

BTEC Tech Awards have been specifically designed:



for 14-16 year olds in schools

to give students a hands-on taste of the sector, and the skills and confidence to take their next steps

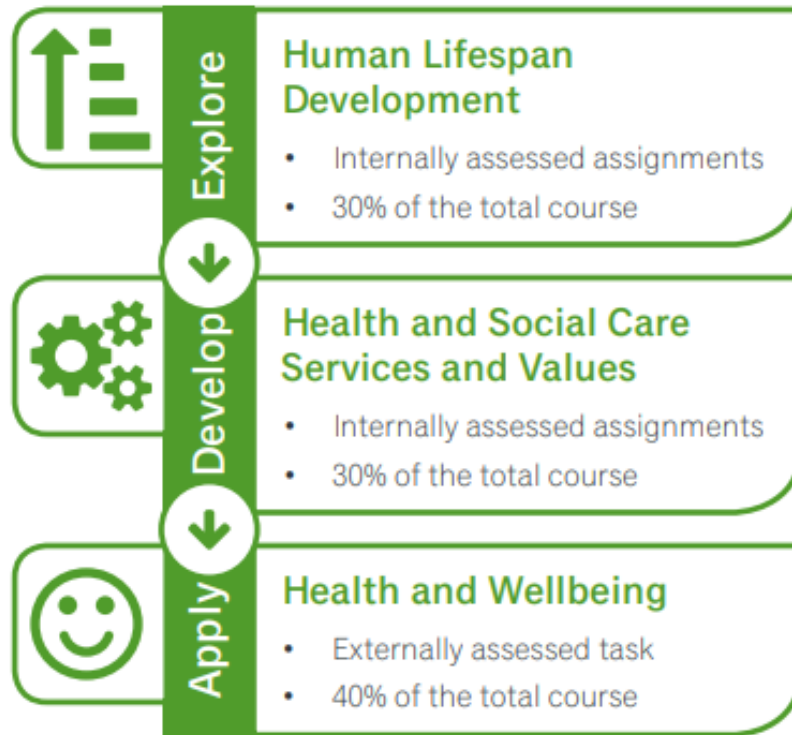
to count in the 'open group' of Progress 8.

Why choose BTEC Tech Award in Health and Social Care?

- Care values are at the heart
- Students apply their learning to a real-life scenario
- The components build on each other so that your students grow in confidence
- Practical tasks rather than written exams
- There's a world of opportunities open to BTEC students

How does the course work?

The course is made up of three components: two internally assessed and one that's externally assessed. Our three-block structure, explore, develop and apply, has been developed to allow students to build on and embed their knowledge. This allows them to grow in confidence and then put into practice what they have learned. Our assessment structure is also designed so that students can build on what they learn, and develop their assignment skills, as they move through the course.



Explore: Component 1 Human Lifespan Development

Aim: understand how we grow and develop throughout our lives

Assessment: internally assessed assignments

Weighting: 30% of total course

During Component 1, students will:

- explore how individuals develop physically, emotionally, socially and intellectually over time
- investigate how various factors, events and choices impact individuals' growth and development
- discover how people adapt to life events and cope with making changes.

Develop: Component 2 Health and Social Care Services and Values

Aim: get to know how the Health and Social Care sector works and the care values that lie at the core of it

Assessment: internally assessed assignments

Weighting: 30% of total course

During Component 2, students will:

- learn which health and social care services are available
- identify why people might need to use these services
- discover who's involved in providing these services
- explore what might stop people from accessing the services they need
- look at the care values the sector has to make sure people get the care and protection they need.

Apply: Component 3 Health and Wellbeing

Aim: help improve someone's health and wellbeing

Assessment: externally assessed task, in which students create a health and wellbeing improvement plan for an individual, based on a brief

Weighting: 40% of total course

To achieve this aim, students will:

- learn what 'being healthy' means to different people
- explore the different factors that might influence health and wellbeing
- identify key health indicators and how to interpret them
- assess an individual's health using what they've learned
- create a health and wellbeing improvement plan for that person, which includes targets and recommendations of support services available
- reflect on the potential challenges the person may face when putting the plan into action.