

**Rod Hughes
Principal**

All standards across the academy
Strategic Planning & Self Evaluation
Academy Development Plan
Finance
Governance
RAP
Line Management: Mathematics. AWF, DSD, PJS, SES, JAL, CAW, MLL, DBB, NMA

Senior Leadership Team 2017-18

Corinne Williams
PA to Principal
HR
Staff Attendance
Payroll
Recruitment

**Andy Fitzgibbon
Vice Principal**

Teaching load: 10/50
Deputise for the Principal
Learning & Teaching across the Academy
Achievement across all Key Stages
SCR (CAW)
Middle Leadership Team
Teaching staff appraisal (JAT)
Learning Walks
Reporting System & Target setting (ZAH)

Line Management:
JAT, JPP, PEL, AMM
English (PJL)
Science (RAY)
Geography (IAD)
Data Manager (ZAH)

**Sharlene Smith
Regional Finance Director**

1 day/week supporting other OAT academies
Strategic overview of all aspects of Finance,
Administration and commercial and business
interests.
Academy budget preparation
Corporate Dress
Catering contract
Responsibility for all support staff
Support staff appraisal
Facilities management
Academy visitors
Maintenance
Hire of facilities
Transport & minibus
Parent Voice Group
Staff induction – Building & Premises
Line management of: DAA, SBB, Site and
grounds staff, Admin and Reception team
Media Technician (DJL)

**Daniel Denker
Senior Assistant Principal**

Teaching load: 20/50
Timetable (JAT)
Curriculum development across all Key Stages
Key Stage 3 Progress & Achievement
Year 7 Catch up
Exam Entries (KHH)
Ebacc provision & performance

Line management of:
Examinations (KHH)
MFL (SAF)
History(LCC & TWW)
PE (MRO)
CEIAG (ZAH)

**Phil Shufflebotham
Senior Assistant Principal**

Teaching load: 20/50
Head of OHA 6
Post 16 academic intervention programmes
KS4 to KS5 transition process
Post 16 retention
E-Safety Officer
Deputy Safeguarding Officer
Social media

Line management of:
ICT (AMM)
Health & Social (NAW)

**Julie Pascall
Assistant Principal**

Teaching load: 25/50
Aspirations Academy
(More Able across the
academy)
SENCO/Student Passport
PSHE/SMSC (MRO)
OHA6 UCAS/Russell Group
applications
OHA6 Leadership Team
Literacy across the curriculum

Line management of:
(SC staff)
Art (AAM)
Citizenship (LCC)
Literacy across the curriculum
(SMG)

**Petra Lea
Assistant Principal**

Teaching load: 25/50
L&T Coach
Student Voice
Big Brother room
Marketing, Press &
Newsletter
Homework
Assemblies
NQTs Lead Tutor
Primary Liaison & Transition
(KLD/HOY7)

Line management of:
Drama (Acting CL Mat)

**Josephine Thomas
Assistant Principal**

Teaching load: 25/50
Staff Development
Training Days
Appraisal
Staff Handbook
Calendar
Timetabling (DSD)
Equal Opps/Diversity
Race Equality
Charity work
Cover (LJB)
Public Events
CED's (MRR)
Admission Appeals
Staff induction

Line management of:
Performing Arts (MJJ)
Design Technology (SEE)

**Alan Myatt
Associate
Assistant Principal**

Teaching load: 30/50
Year 7
Staff Wellbeing
AT/GTP/ITT
Staff Duties
Anti-Bullying alliance

**Deb Bolton
Assistant Principal**

Teaching load: 15/50
Safeguarding Officer
Child Protection (JEA)
Student conduct across
the academy
Attendance
Punctuality
LAC
Admissions (AAS)
Student uniform
Alternative Provision (JEA)

Line management of:
SLC
RSLs
HOY/AHOY
POD/REFLECT/IE

**Jason Liddle
Assistant Principal
Director of Maths**

Teaching load: 25/50
L&T Coach
Numeracy across the
curriculum
NQT Tutor
Pupil Premium students
performance
More Able students
performance

Line management of:
Mathematics
(MHH/AVV/JJM)
RE (AMA)

**Michelle Lawrence
Associate
Assistant Principal**

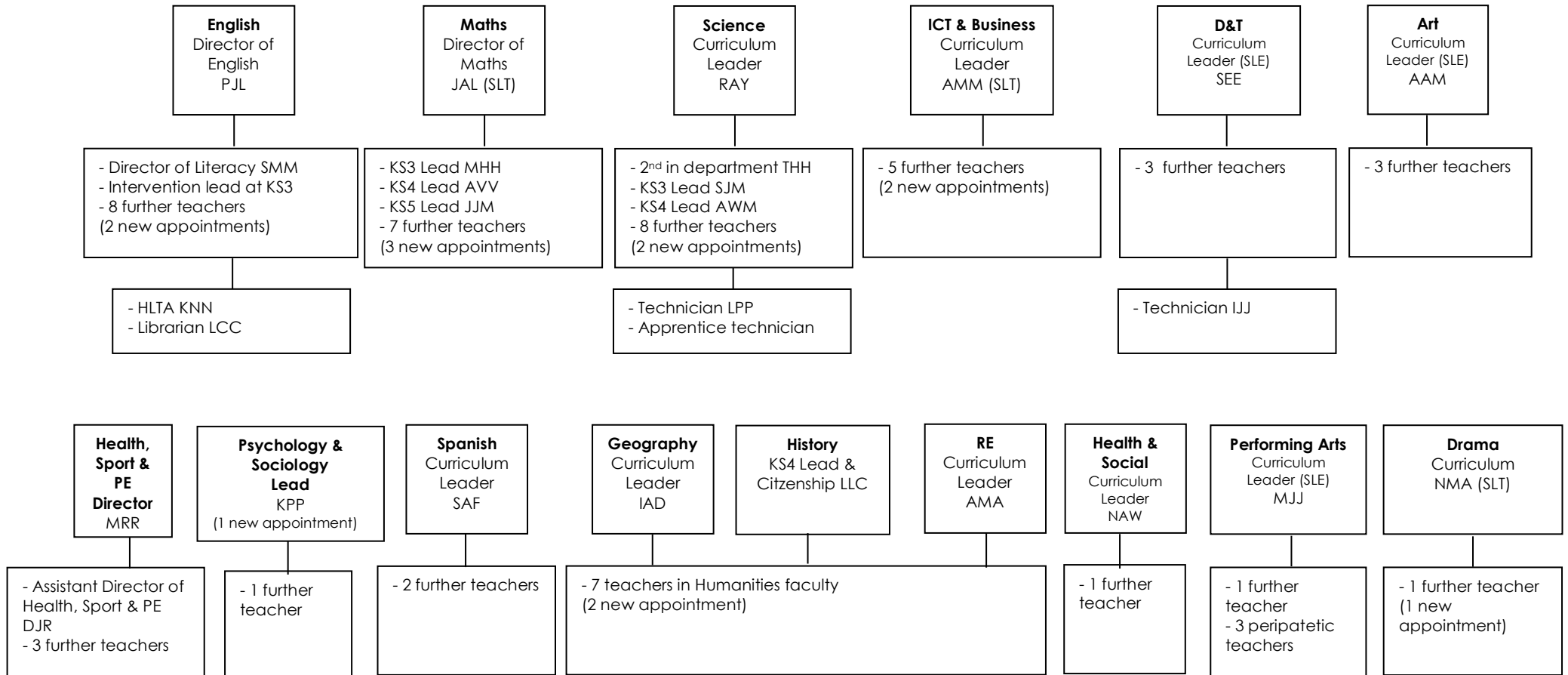
Teaching load: 30/50
Year 11
L&T Coach
NQT Tutor
Rewards

Line management of:
Social Sciences (KPP)
Year 11HOY (DAD)

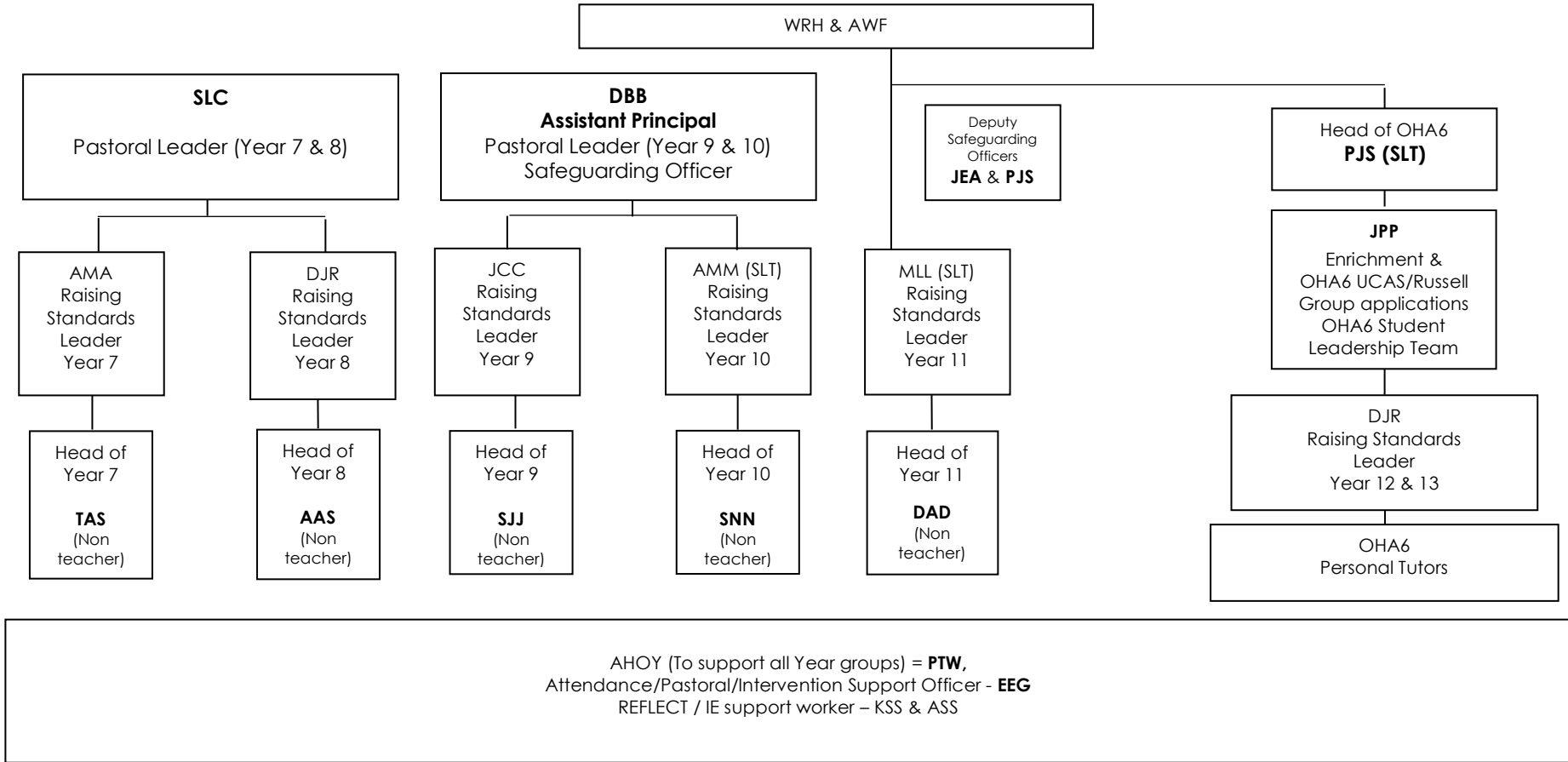
**Natalie Ashworth/
Mat Cover
Associate
Assistant Principal**

Teaching load: 30/50
L&T Coach
Enrichment/Clubs
NQT Tutor
Personal Tutor time
Prefects

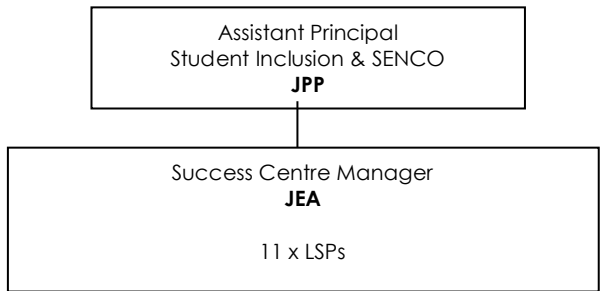
Departmental Structure 2017 - 18



Pastoral Care - Structure 2017-18



Learning Support - Structure 2017 -18



Administration & Operational Services 2017 - 2018

